

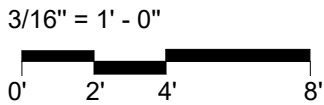
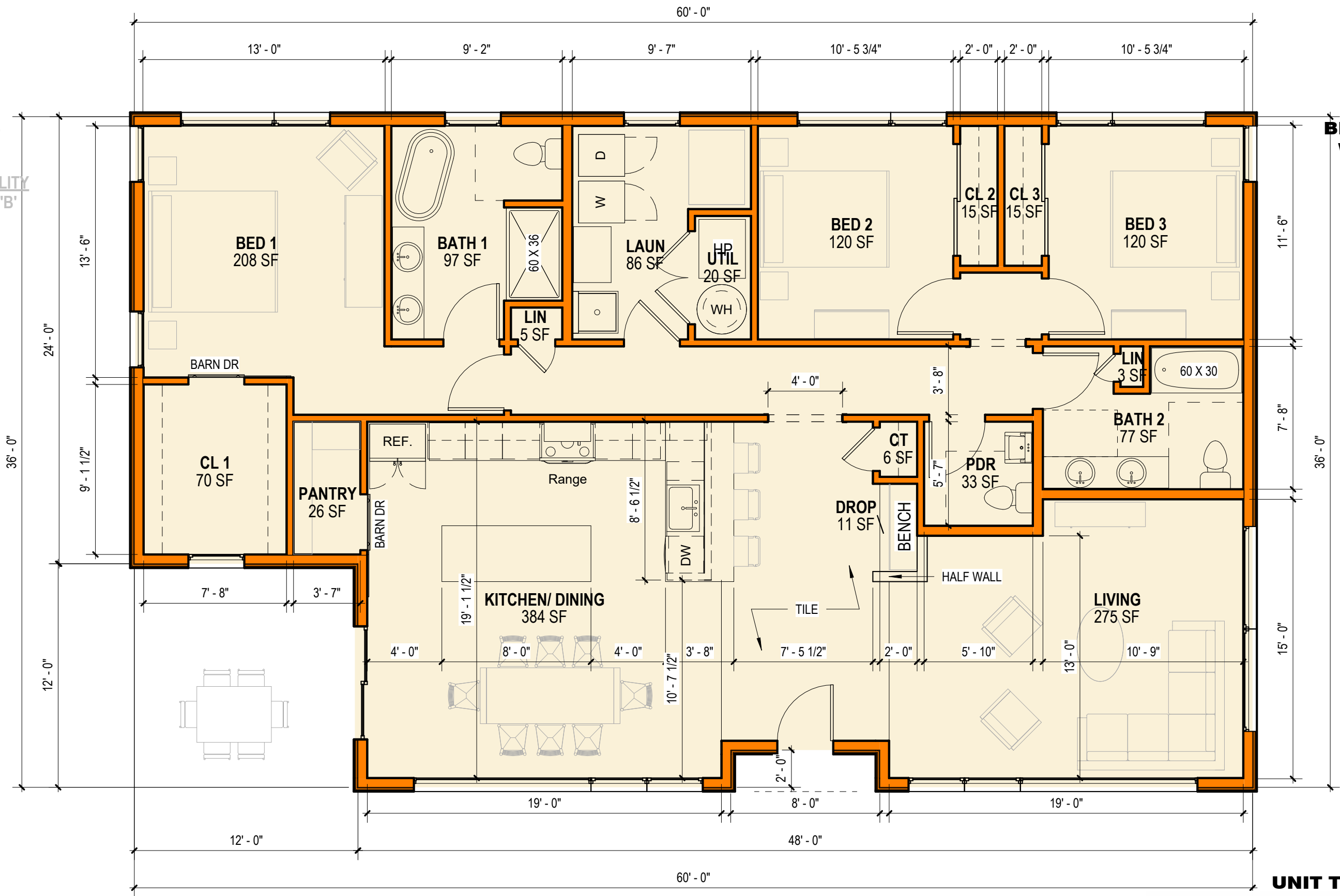
E

UNIT TYPE:
FLAT

ACCESSIBILITY
ANSI TYPE 'B'

BLUE COLUMBINE
Wheat Ridge, CO

50% SD



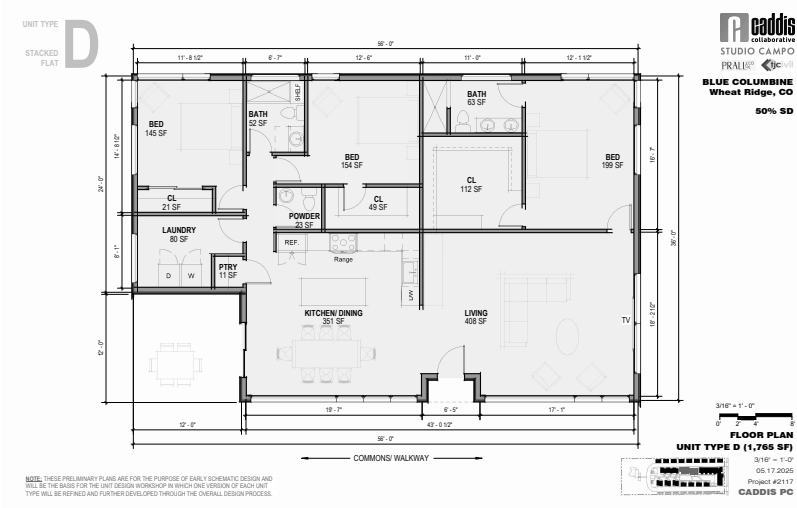
FLOOR PLAN
UNIT TYPE E (2,000 SF)

NOTE: THESE PRELIMINARY PLANS REPRESENT REVISIONS TO UNIT PLANS PRESENTED AT THE WORKSHOP HELD ON 05.17.2025 AND WILL BE THE BASIS FOR THE FINAL SCHEMATIC DESIGN PHASE OF THE PROJECT. FURTHER REFINEMENT WILL BE OCCUR IN THE SUBSEQUENT DESIGN DEVELOPMENT PHASE.



3/16" = 1'-0"
06.03.2025
Project #2117
CADDIS PC

PLAN AS PRESENTED AT WORKSHOP



SUMMARY OF REVISIONS:

- PLAN DESIGNATION CHANGED FROM 'D' TO 'E'
- OVERALL PLAN DIMENSIONS INCREASED FROM 56'X36' TO 60'X36' RESULTS IN AREA INCREASE OF **235 SF**
- MINOR ADJUSTMENTS TO INSET ENTRY DOOR LOCATION (CENTERED ON OVERALL SPACE)
- DROP ZONE ADDED PLAN NORTH OF MAIN ENTRY
- PRIMARY BEDROOM AND SECONDARY BEDROOMS FLIPPED TO BETTER UTILIZE UNIT FOOTPRINT
- CIRCULATION SIMPLIFIED FOR BETTER EFFICIENCY
- TYPE 'B' ACCESSIBILITY CLEARANCES PROVIDED THROUGHOUT.
- PRIMARY BATH UPGRADED TO 5-PIECE
- SECONDARY BATH UPGRADED TO 4-PIECE

