

F

UNIT TYPE:
TOWNHOUSE

ACCESSIBILITY:
ANSI TYPE 'B' @
LEVEL 1;
'ADAPTABLE' @
LEVEL 2

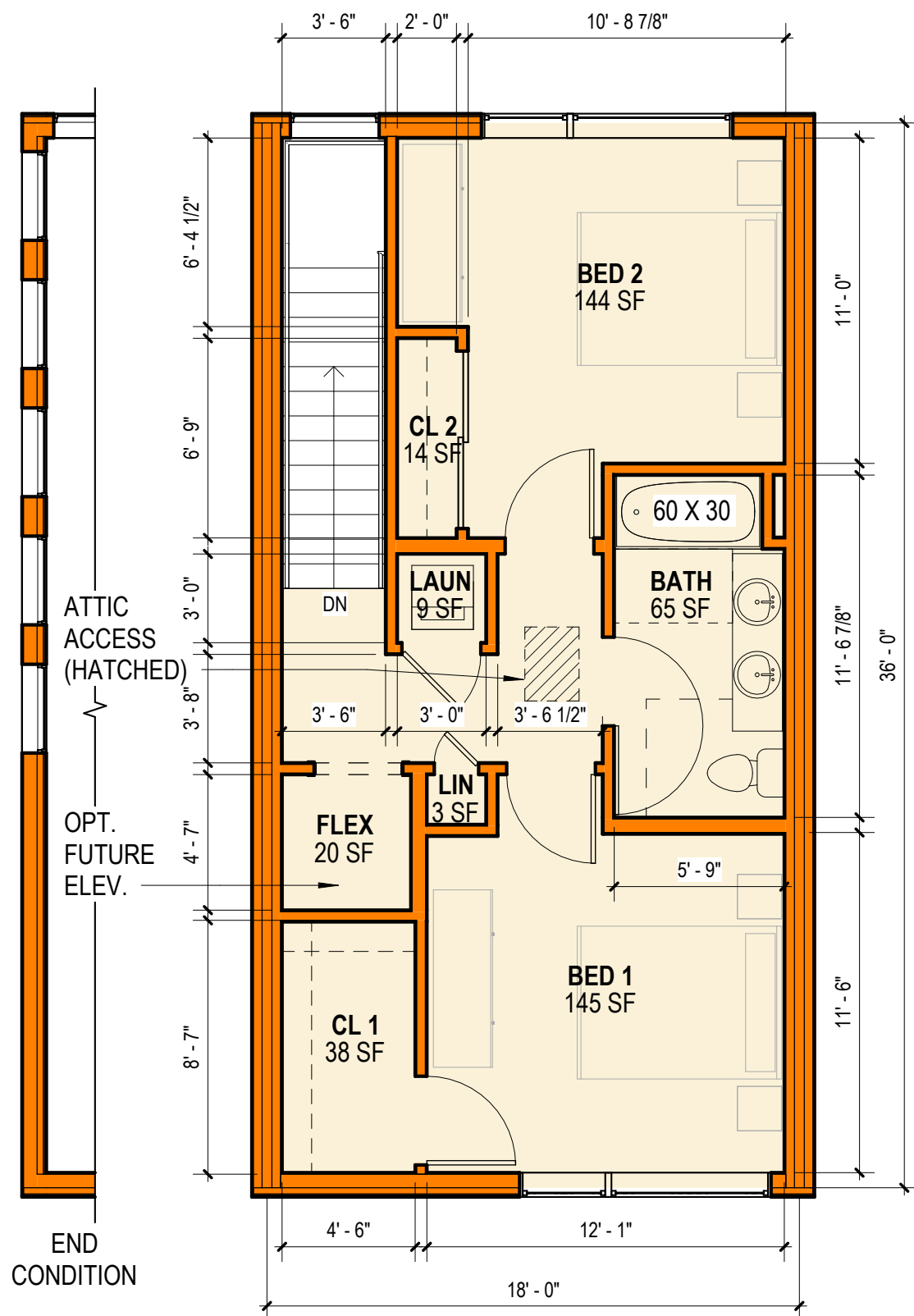


STUDIO CAMPO

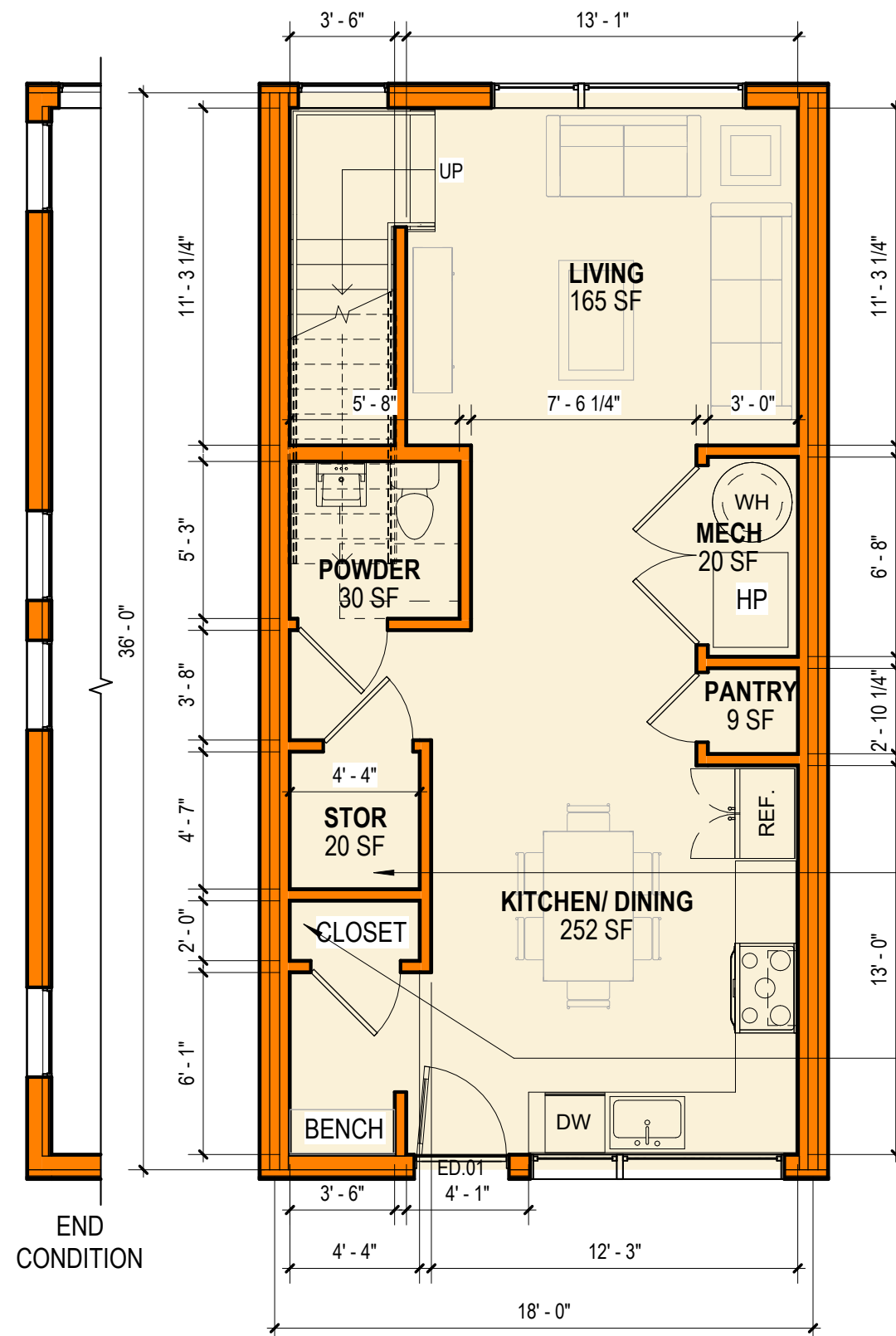


**BLUE COLUMBINE
COHOUSING**

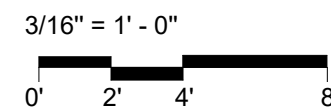
50% SD



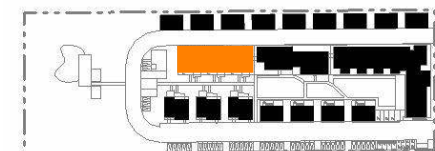
2 LEVEL 2 FLOOR PLAN (584 SF)
3/16" = 1'-0"



1 LEVEL 1 FLOOR PLAN (648 SF)
3/16" = 1'-0"



**FLOOR PLAN
UNIT TYPE F (1,232 SF)**



3/16" = 1'-0"

06.03.2025

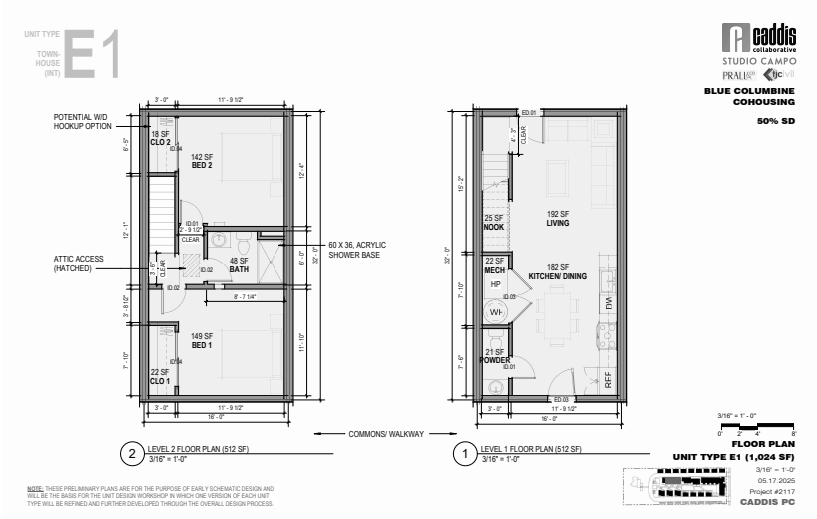
Project #2117

CADDIS PC

NOTE: THESE PRELIMINARY PLANS REPRESENT REVISIONS TO UNIT PLANS PRESENTED AT THE WORKSHOP HELD ON 05.17.2025 AND WILL BE THE BASIS FOR THE FINAL SCHEMATIC DESIGN PHASE OF THE PROJECT. FURTHER REFINEMENT WILL BE OCCUR IN THE SUBSEQUENT DESIGN DEVELOPMENT PHASE.

COMMONS/ WALKWAY

PLAN AS PRESENTED AT WORKSHOP



SUMMARY OF REVISIONS:

- PLAN DESIGNATION CHANGED FROM 'E' TO 'F'
- OVERALL PLAN DIMENSIONS INCREASED FROM 16'X32' TO 18'X36'; AN INCREASE OF **208 SF**
- KITCHEN LAYOUT CHANGED FROM LINEAR TO 'L' AND ENTRY MOVED ACCORDINGLY
- DROP ZONE ADDED ADJACENT TO ENTRY
- REAR DOOR OMITTED
- TYPE 'B' ACCESSIBILITY CLEARANCES PROVIDED THROUGHOUT LEVEL 1. LEVEL 2 LAYOUT MADE 'ADAPTABLE' TO ACCOMMODATE FUTURE ACCESSIBILITY WITH POTENTIAL FUTURE ELEVATOR
- ELEVATOR AND MACHINE ROOM SPACES PROVIDED
- END UNIT CONDITION FLIPPED SO ORIENTATION OF UNITS REMAINS CONSISTENT AND TO ALLOW FOR MORE FENESTRATION

