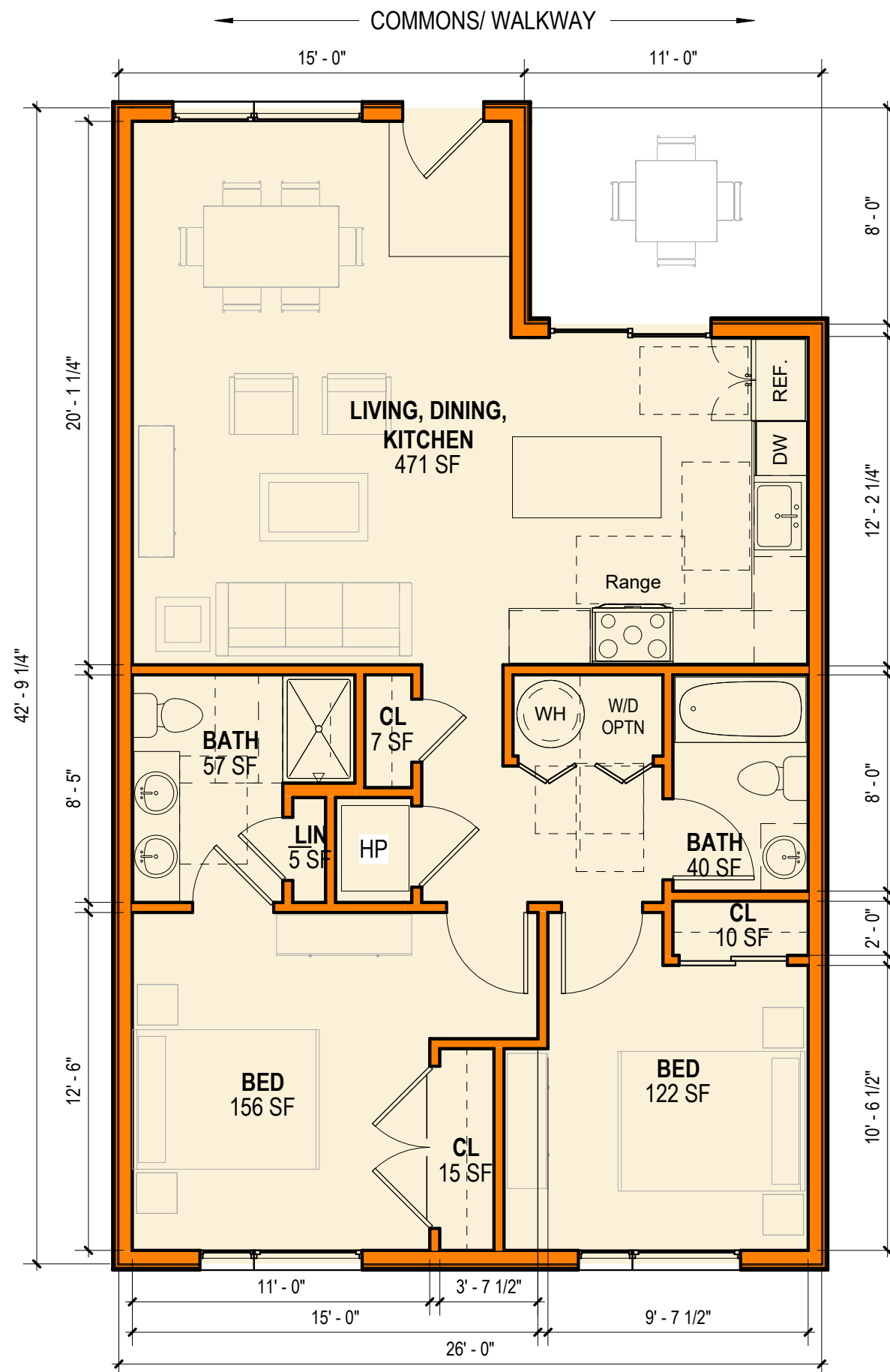


ACCESSIBILITY:
ANSI TYPE 'B'



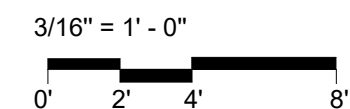
STUDIO CAMPO

PRALL & CO 

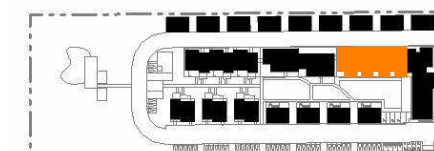
BLUE COLUMBINE
Wheat Ridge, CO

50% SD

NOTE: THESE PRELIMINARY PLANS REPRESENT REVISIONS TO UNIT PLANS PRESENTED AT THE WORKSHOP HELD ON 05.17.2025 AND WILL BE THE BASIS FOR THE FINAL SCHEMATIC DESIGN PHASE OF THE PROJECT. FURTHER REFINEMENT WILL BE OCCUR IN THE SUBSEQUENT DESIGN DEVELOPMENT PHASE.



FLOOR PLAN
UNIT TYPE D (1026 SF)

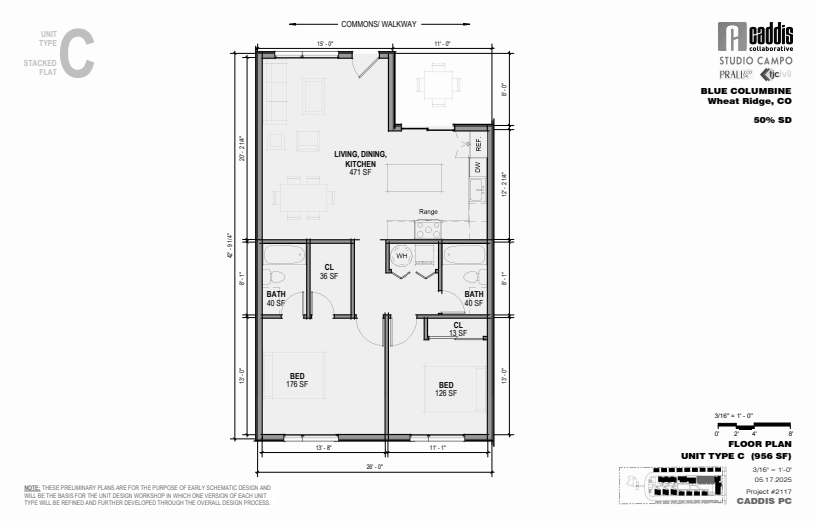

$$3/16'' = 1'-0''$$

06.03.2025

Project #2117

CADDIS PC

PLAN AS PRESENTED AT WORKSHOP →



SUMMARY OF REVISIONS:

- PLAN DESIGNATION CHANGED FROM 'C' TO 'D'
- UNIT SF UPDATED TO REFLECT 'GROSS' AREA (1026 SF) VS PREVIOUS 'NET' (956 SF)
- TYPE 'B' ACCESSIBILITY PROVIDED THROUGHOUT
- 1-BEDROOM PLAN PROVIDED IN LIEU OF PREVIOUS 2-BEDROOM LAYOUT
- PANTRY ADDED

D

UNIT TYPE:
FLAT

ACCESSIBILITY:
ANSI TYPE 'B'

